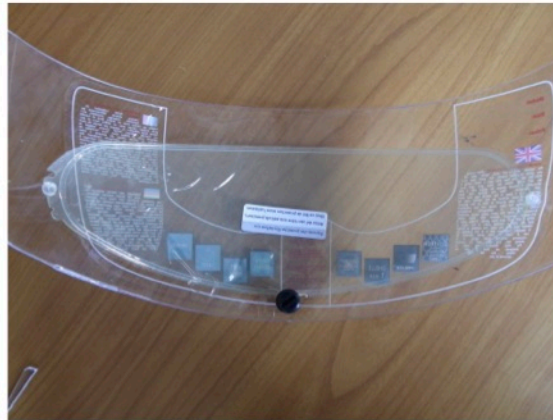


Installing a PinLock anti fog screen in a DF hood



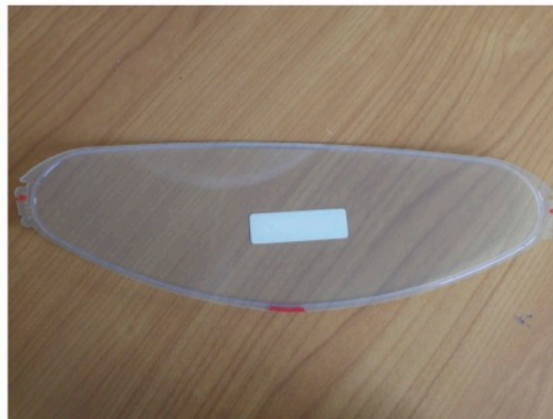
For optimal positioning and ease of use, the PinLock screen needs to be mounted a bit higher than normal. To achieve this, the middle indentation is used to mount it, instead of the top one. You'll need to make it a bit larger, as marked here in red.



After adjusting the indentations the PinLock screen can be mounted in the visor to check if it fits. It is easier to do this with the visor removed from the hood.



After the final trims, mount the screen in the visor and the visor in the hood. Remove the protective film.



You might need to trim the screen a bit at the bottom to create enough space for the operating lever. Be careful not to damage the seal.



Adjust the tension by rotating the eccentric pins until you get a proper seal between the PinLock and the visor as per the instructions that came with the PinLock screen.